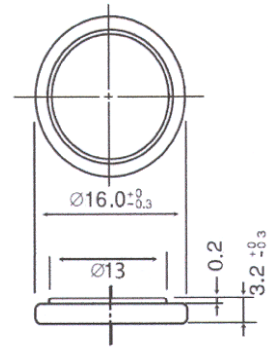


DYNAMIS

LITHIUM-MANGAN-LINE

LM 1632 Order no. 60.08513

3,0V Primary Lithium-Manganese Dioxide (Li-MnO₂)



Electrical characteristics

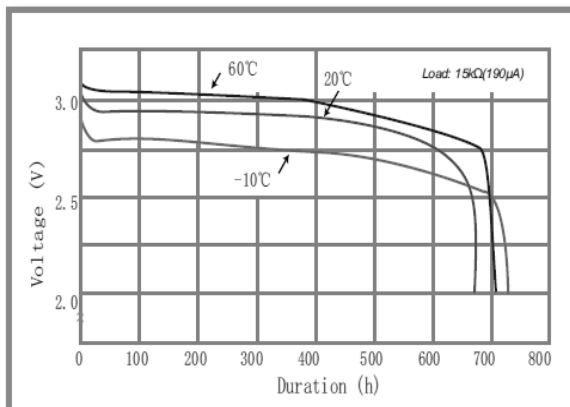
(typical values relative to cells stored for one year or less at +30°C max.)

nominal capacity (30Kohm, 2.0V off)	120 mAh
nominal voltage	3,0V
max. constant current	3 mA
max. pulse current	8 mA
operating temperature range	-20°C ~ +70°C
service life under proper range	10 years

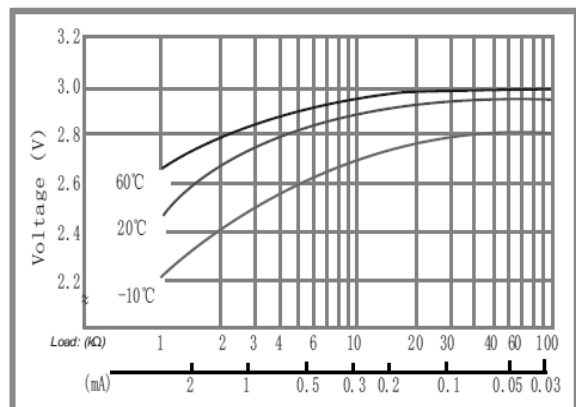
Physical characteristics

diameter (max.)	16,0 mm
height (max)	3,2 mm
typical weight	1,6 g

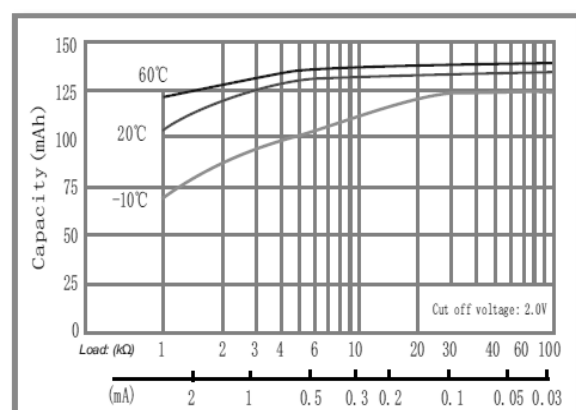
1. TEMPERATURE CHARACTERISTICS



2. OPERATING VOLTAGE VS. LOAD RESISTANCE



3. CAPACITY VS. LOAD RESISTANCE



Warning

- Avoid short-circuit and/or any charge between "+" and "-"
- Remove battery when discharged to cut-off voltage
- Do not over-discharge, expose to fire or inflict any damage.
- Sealing tightness less than 5 seconds at 200-250 °C

* The information (subject to change without notice) contained in this document is for reference only and should not be used as a basis for product guaranty or warranty. For applications other than those described here, please consult your nearest DYNAMIS Sales or Marketing Office or Distributors.